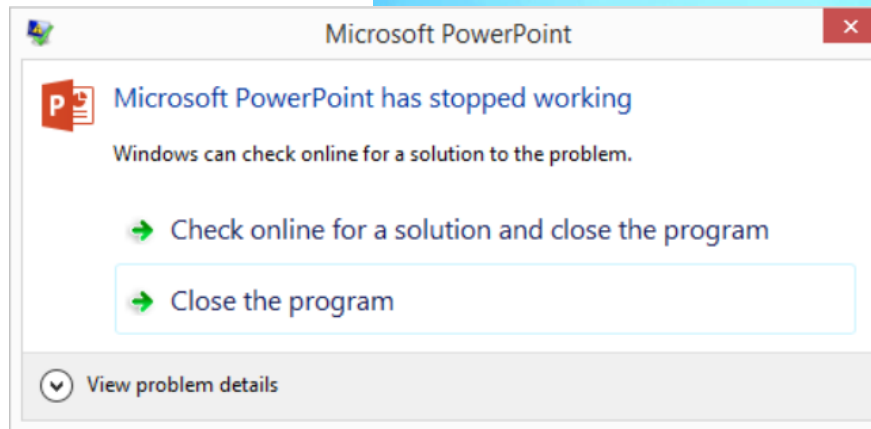




**Building a Cyber  
Safe and Resilient  
Maritime  
Ecosystem**

# Vessel Th Landscap





## What will a seafarer do?

1. GPS is showing a wrong location?
2. AIS is not functioning?
3. ECDIS not showing correct data?



“Can a vessel be hacked remotely?”

33%

*felt that one of the biggest challenges in improving cyber risk management is understanding the level of risk.*

Extract from CyberOwl-HFW-Thetius Cyber Security Report 2023

“Can a cyber attack really do this.....?”

“But....Our systems are offline.”

“We have procedures if a system fails.....wait.....Cyber attack?”

“Let me ask the maker.”

# Expectation vs Reality

# Challenges

From a ship operator's perspective





## Resource Constraints

- Regulatory Compliance.
- Lack of investments in Technologies and People.
- Increase in costs from Supply Chain.

# Building a Cyber Resilient Ecosystem






**“Crew can be either your strongest defence or your weakest link.”**

## Training

- Beyond basic Cyber Awareness
- Crew Incident response handling
- OT Cybersecurity Training
- Regulate into STCW / Extend from ISPS

The background of the slide is a close-up photograph of several network cables plugged into a patch panel. The cables are in various colors: blue, green, yellow, orange, and red. The red cable in the foreground is the most prominent, with its RJ45 connector clearly visible. The other cables are slightly out of focus, creating a sense of depth.

**“In Case of Cyber  
attack, break  
glass and pull  
Cable.”**

## Incident Response

- Live Drills – Vessel Environment
- Simulated Drills – Testbeds
- Red Team vs Blue Team exercise



# Information Sharing

- Threat Intelligence
- Vulnerabilities
- Post incident case studies

**Help?**





**Thank You.**